

Cynomolgus/Rhesus macaque PD-L1/B7-H1 Protein

Cat. No. PDL-CM110

Description

Source	Recombinant Cynomolgus/Rhesus macaque PD-L1/B7-H1 Protein is expressed from HEK293 with His tag at the C-Terminus. It contains Phe19-Arg238.
Accession	G7PSE7
Molecular Weight	The protein has a predicted MW of 26 kDa. Due to glycosylation, the protein migrates to 35-45 kDa based on Tris-Bis PAGE result.
Endotoxin	Less than 1EU per µg by the LAL method.
Purity	> 95% as determined by Tris-Bis PAGE > 95% as determined by HPLC

Formulation and Storage

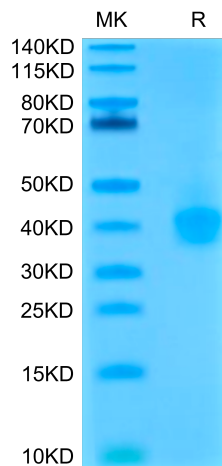
Formulation	Lyophilized from 0.22µm filtered solution in PBS (pH 7.4). Normally 8% trehalose is added as protectant before lyophilization.
Reconstitution	Centrifuge the tube before opening. Reconstituting to a concentration more than 100 µg/ml is recommended. Dissolve the lyophilized protein in distilled water.
Storage	-20 to -80°C for 12 months as supplied from date of receipt. -20 to -80°C for 3-6 months in unopened state after reconstitution. 2-8°C for 2-7 days after reconstitution. Recommend to aliquot the protein into smaller quantities for optimal storage. Please minimize freeze-thaw cycles.

Background

B7-H1, also known as PD-L1 and CD274, is an approximately 65 kDa transmembrane glycoprotein in the B7 family of immune regulatory molecules. PD-L1 has been identified as the ligand for the immunoinhibitory receptor programmed death-1(PD1/PDCD1) and has been demonstrated to play a role in the regulation of immune responses and peripheral tolerance.

Assay Data

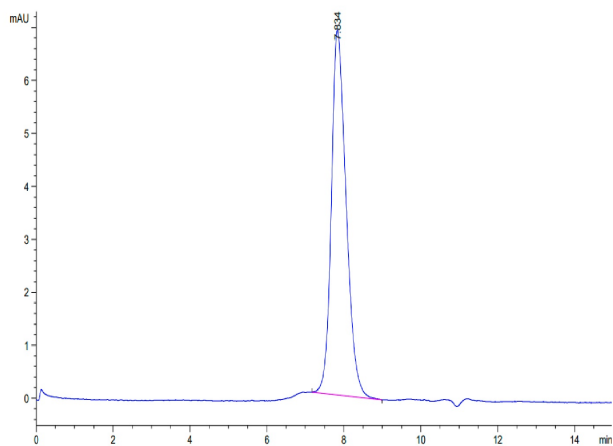
Tris-Bis PAGE



Cynomolgus/Rhesus macaque PD-L1 on Tris-Bis PAGE under reduced condition. The purity is greater than 95%.

SEC-HPLC

Assay Data

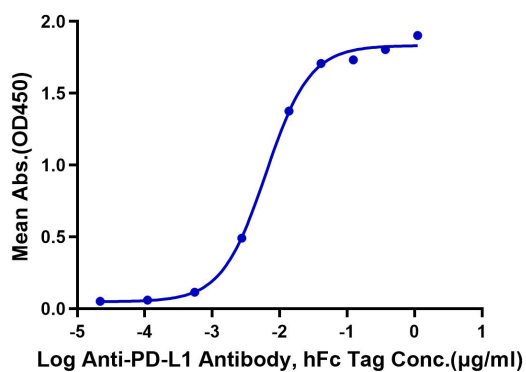


The purity of Cynomolgus/Rhesus macaque PD-L1 is greater than 95% as determined by SEC-HPLC.

Assay Data

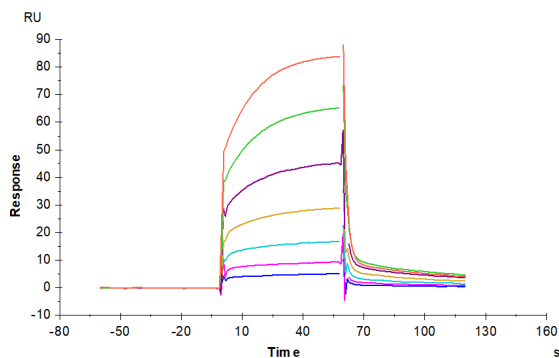
ELISA Data

Cynomolgus PD-L1, His Tag ELISA
0.1µg Cynomolgus PD-L1, His Tag Per Well



Immobilized Cynomolgus/Rhesus macaque PD-L1, His Tag at 1µg/ml (100µl/Well) on the plate. Dose response curve for Anti-PD-L1 Antibody, hFc Tag with the EC50 of 6.2ng/ml determined by ELISA (QC Test).

SPR Data



Cynomolgus PD-1, hFc Tag captured on CM5 Chip via Protein A can bind Cynomolgus/Rhesus macaque PD-L1, His Tag with an affinity constant of 1.28 µM as determined in SPR assay (Biacore T200).